



**USER GUIDE**

# **KEYSCAN OPENEYE VIEWER**

**INSTALLATION AND OPERATION  
GUIDE**

# TABLE OF CONTENTS

Keyscan OpenEye Viewer Installation and Use Guide .....	2
INSTALLING THE KEYSKAN OPENEYE VIEWER.....	2
CONNECTING TO A CAMERA.....	2
SEARCHING VIDEO FOR TIME AND DATE.....	3
VIEWING CAMERA VIDEO .....	4
COMMAND LINE FUNCTIONS.....	5
<b>LIVE OPTIONS .....</b>	<b>5</b>
<b>PLAYBACK OPTIONS .....</b>	<b>5</b>

# Keyscan OpenEye Viewer Installation and Use Guide

The Keyscan OpenEye Viewer allows users to view video retrieved through OpenEye Web Services (OWS) that corresponds with access control events for video verification. Live video can be transmitted directly to the Keyscan Viewer, and recorded video can be accessed by camera, date and time. Multiple cameras can be displayed in a grid layout, and PTZ cameras can also be controlled in the viewing pane.

## INSTALLING THE KEYSKAN OPENEYE VIEWER

---

Use the link below to download and install the Keyscan OpenEye Viewer:

<https://www.openeye.net/software/keys-can-ows-viewer>

1. Click the Download button to download the application.
2. Once the download is complete, open the .exe file to begin installation.
3. Follow the installation wizard.

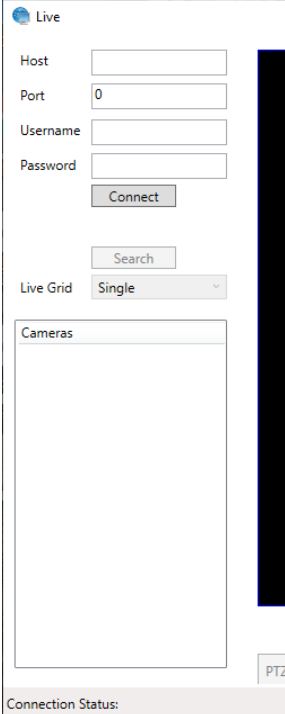
The app will be installed on the local PC as OpenEye Viewer.

## CONNECTING TO A CAMERA

---

To connect to a camera:

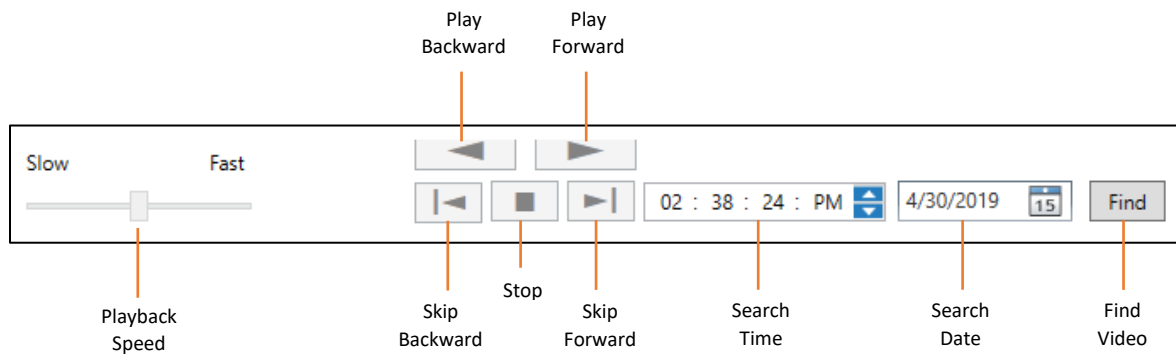
1. Enter information identifying the Host, Port, Username and Password in the Viewer and then click Connect.
  - **Host** – The Host field must contain one of the following:
    - Device ID (if system is in OWS)
    - IP Address
  - **Port** – The Port field must contain one of the following:
    - 0 (when connecting with Device ID)
    - HTTP port (if connecting via IP address)
  - **Username and Password** – The Username and Password fields must contain one of the following:
    - OWS account credentials
    - local PC user credentials



The screenshot shows the 'Live' viewer interface. It features a 'Host' field, a 'Port' field with '0' entered, 'Username' and 'Password' fields, and a 'Connect' button. Below these is a 'Search' button and a 'Live Grid' dropdown menu set to 'Single'. A 'Cameras' list area is visible but empty. A 'PTZ' button is located at the bottom right. At the very bottom, there is a 'Connection Status:' label.

## SEARCHING VIDEO FOR TIME AND DATE

---



**Search** allows the user to display video recorded from a single camera at a specific time and day.

1. Click **Search**.
2. Double click a camera in the **Cameras** list.



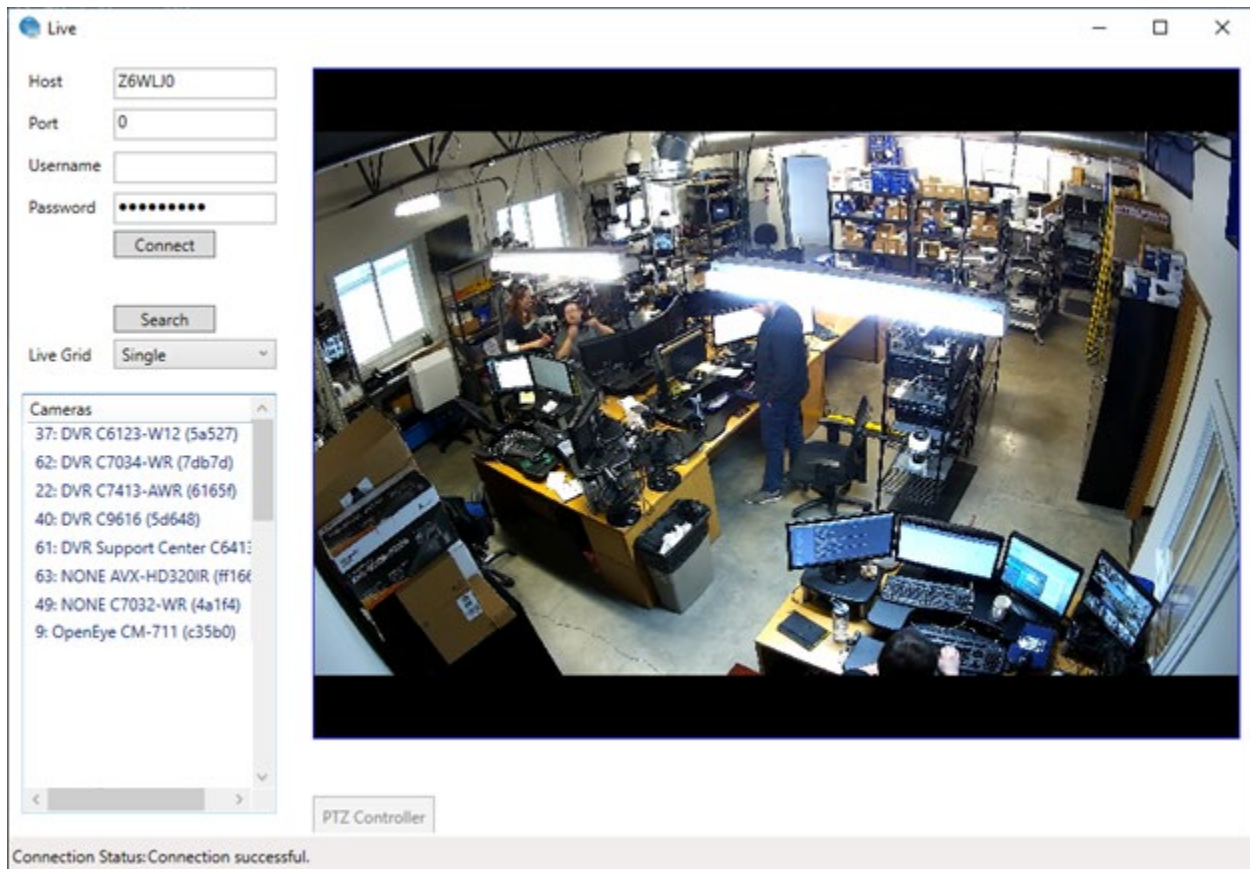
**Note** Search is single channel only. Grid is disabled for Search.

3. Select the **Time** and **Date** of the recorded video.
4. Click **Find**.



**Note** If you do not see the buttons, your window is too small. Click and drag on the edges and corners of the Viewer to expand.

## VIEWING CAMERA VIDEO



**Live Grid** – The Live Grid allows the user to switch between different grid layouts in the viewing pane.



**Note** Changing grid will remove active cameras, they will need to be re-added by double clicking the camera from the camera list.

**Cameras** – Camera list auto-sorts by camera name; it cannot be sorted.

**PTZ Controller** – The PTZ Controller allows the user to move PTZ cameras remotely via the Viewer.

## COMMAND LINE FUNCTIONS

---

The Keyscan Viewer does not save the configuration between uses. You are able to load settings using command line or with a RUN command.

### LIVE OPTIONS

- -S/s IP Address or Device ID of the recorder. Use ':' to specify the port number (optional).
- -C/c This is the camera number of the recorder that will display the live video.
- -M/m This is the mode of operation - live for live, playback for search.
- -U/u Username
- -P/p Password

### Optional

- -G/g This is the preset number for the selected camera.

### Example:

```
OpenEyeViewer.exe -s192.168.10.2:2000 -c1 -g2 -mlive -uuser -ppassword
```

### PLAYBACK OPTIONS

- -S/s IP Address or hostname of the recorder. Use ':' to specify the port number (optional).
- -C/c This is the camera number of the recorder that will display the playback video.
- -M/m This is the mode of operation – playback.
- -U/u Username
- -P/p Password
- -D/d This is the playback start date: Formatted as MMDDYYYY
- -B/b This is the playback start time: Formatted as HHMMSS
- -O/o This is the playback end date: Formatted as MMDDYYYY
- -E/e This is the playback end time: Formatted as HHMMSS

### Example:

```
OpenEyeViewer.exe -sExampleNVRName -c1 -mplayback -d01012014 -b080000 -o01012014 -e082959 -uuser -ppassword
```